

***The Old Corner Grill and Bottle Shop
Timeline in History***



The Old Corner Grill and Bottle Shop

Timeline in History



J.W.C. Floyd Photo #281 of the Curb Market on East Church Street. Photo taken c. 1900 looking west from Grove Street to Vesper Street.

The first six bays of this nine-bay building were removed. The three remaining are the subject of this presentation. A bay is a vertical division of a building, typically defined by windows and doors. The front façade of the *Old Corner*, as it now exists, comprises three bays.



2022



C. 1965

Early Years

The 1862, H. F. Walling *Map of Lock Haven*, portrays two vacant lots at the northwest corner of Church and Grove Streets. These lots would remain vacant for nearly a decade until after the Civil War. With the arrival of the railroad and the booming lumbering industry, Lock Haven was thriving and by 1870 it was incorporated as a City.

History records conflicting statements for *The Old Corner's* date of construction.

In 1875, D. S. Maynard in his book titled, *A Historical View of Clinton County*, stated on page 63 that “a fine building to be used for stores was just erected on the northwest corner of Church and Grove Street by George Strayer”, who incidentally owned the Strayer Brick Yard.



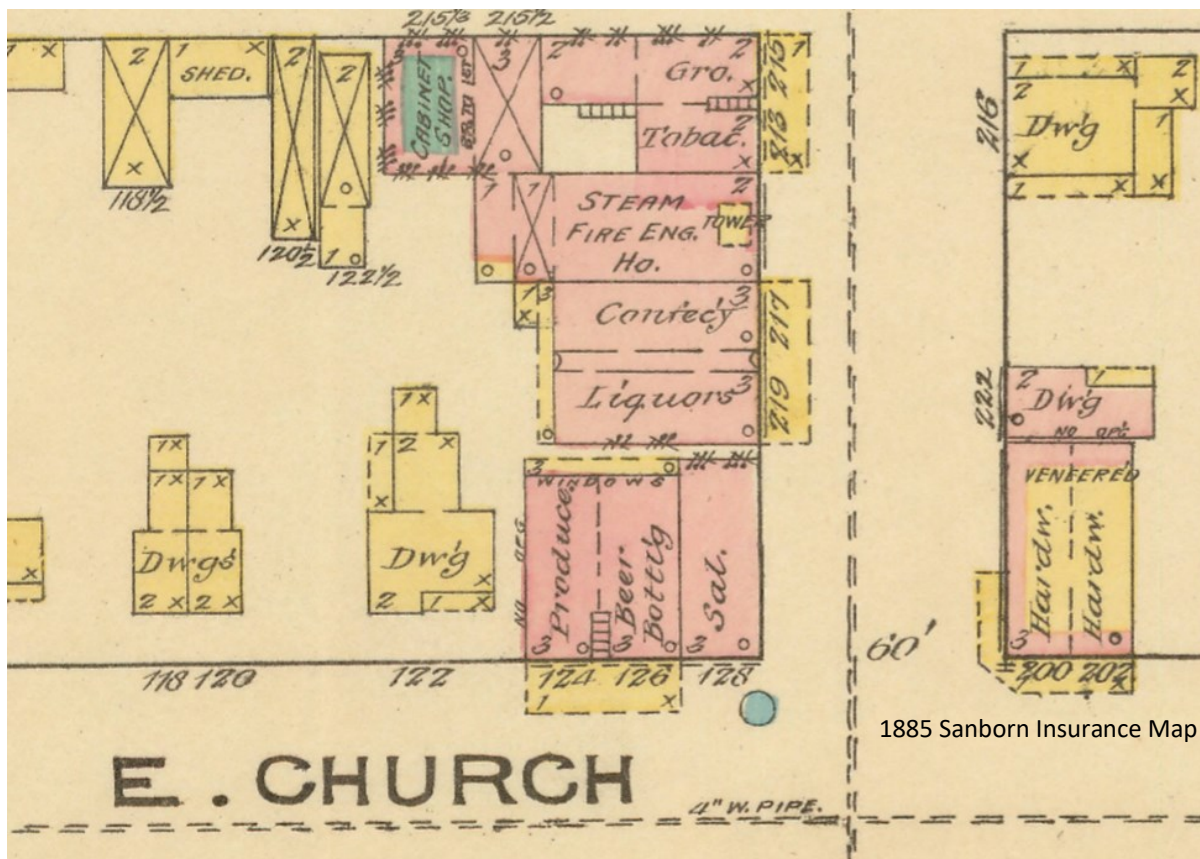
And in J. Milton Fury's 1892 book, *The Past and Present of Clinton County*, he asserts (see excerpt below) that the building was constructed in 1871. Of the two dates, the 1871 date is the one verified by Clinton County Tax Assessment Records and attributed to George Strayer. It is very probable that Strayer may have built the building on speculation. It originally comprised three storefronts. The *Old Corner's* address was 128 East Church Street and the adjoining building address was 124-126 East Church Street. In 1875, 1876 and forward, Peter Beck was assessed as a hotel keeper on a one-third lot containing a brick dwelling and saloon. Beck operated the corner portion as a hotel and saloon until his death in November 1891. He was born in Wurttemberg Germany and came to Lock Haven in spring 1851. A municipal parking lot now occupies the western two-thirds of the original Strayer Building.

Beck's hotel was built by Peter Beck in 1871, and kept by him as a hotel until W. H. Beck, its present proprietor, took possession. This house has sleeping apartments with room for thirty guests. It is a brick structure, located at the corner of Church and Grove streets.

Map History

In 1885 the first Sanborn Insurance Map for the City of Lock Haven was completed. The *Old Corner* at 128 East Church Street was documented as a three-story brick building used as a saloon. Windows existed on all three floors. This map supports the concept that the two storefronts at 124 and 126 were constructed at the same time as the *Old Corner* as evidenced by a common (dashed) wall. A stair to the upper floors existed between the 124 section and the 126 section. In addition these two sections had a three story wood frame porch on the rear with windows overlooking the porch. Also joining these two storefronts was a one-story, wood frame canopy that extended over the sidewalk to the curb. (See photo on page one.) Note that the uses surrounding the saloon were beer bottling and produce to the west and liquor sales to the north. A curbside market was created by Lock Haven City Council in 1872 and extended on the west side of Grove Street to Bald Eagle Street and along West Church Street, from Grove to Vesper Street.

Two years prior to the publication of this map, a city directory was compiled. It provided documentation that the corner building at 128 was a hotel and at 126 E. Church Street was Globe Bottling Works operated by Ward Holloway. In 1887, a Williamsport *Sunday Grit* newspaper reported that by July 1 of that year, Globe Bottling Works had produced 250 barrels of beer and 500 cases of “summer beverages.”



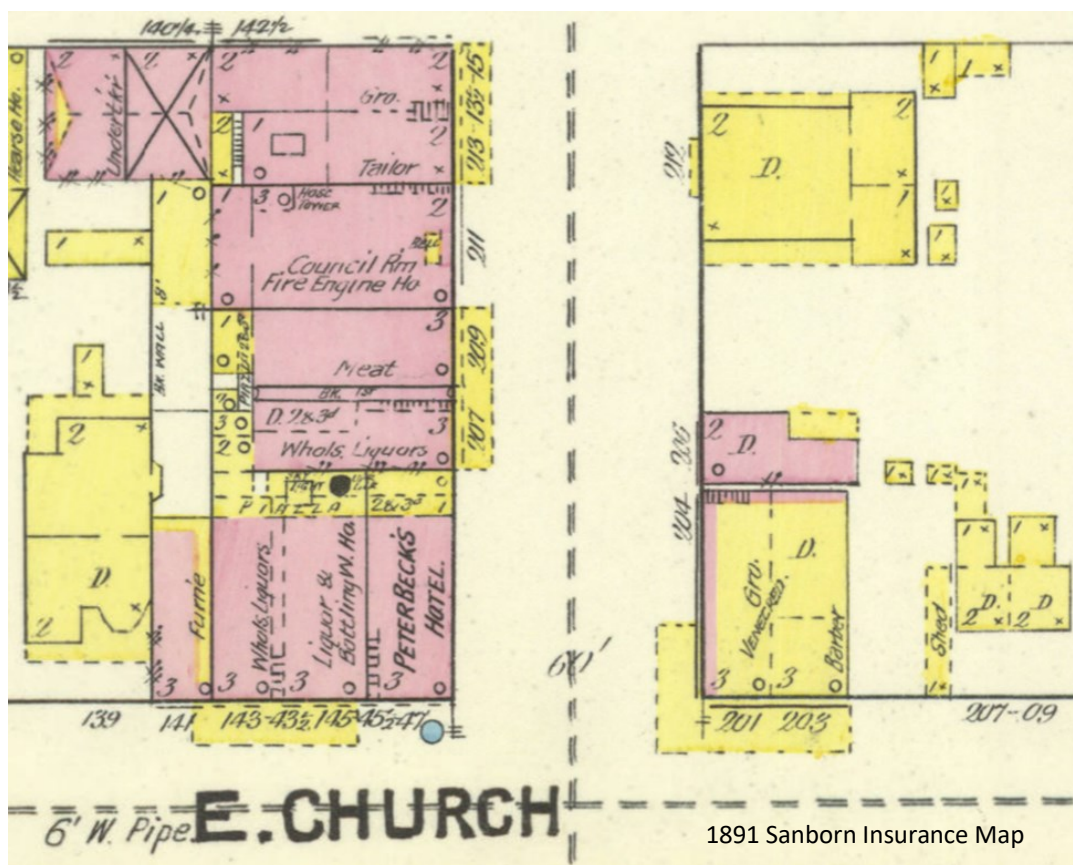
1885 Sanborn Insurance Map

Two years after the City Directory was published, in 1889, the Lock Haven Globe Bottling Works was bottling ginger ale and soft drinks and Rochester (NY) Brewing Company's beer, advertised in 1893 as the finest table beer in the country. Globe Bottling Works also had a facility in Williamsport at 127 East Fourth Street.

Fury notes in 1892 that the corner building was Peter Beck's Hotel which is accurate based on the 1891 Sanborn Insurance Map (below) identifying the *Old Corner* by name. Fury also noted that the hotel had a capacity for 30 overnight guests — perhaps indicating that the upper floors of all three building sections served as hotel space. Peter Beck died in 1891 and in 1892 W. H. Beck took possession of the hotel.

Addressing updates occurred in Lock Haven between 1885 and 1889. The East Church Street buildings numbered 124, 126 and 128 became 143, 145 and 147. The 1890 Directory of Lock Haven published on January 1, 1889 indicates that the Globe Bottling Works was still in operation under the management of Ward B. Holloway at what was, by then 145 E. Church Street. The former produce supplier had now transitioned to a wholesale liquor supplier as did the building use to the north.

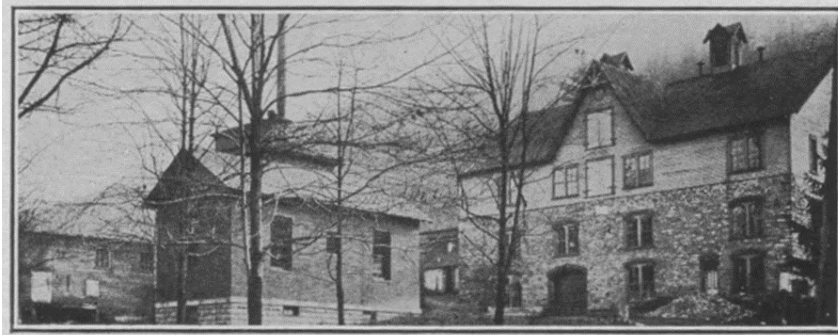
Note that the rear porch was redesigned and in 1891 incorporated a vertical steam boiler as evidenced by the black dot. A steam boiler will feature into this corner's history.



1891 Sanborn Insurance Map

Brewing, Bottling and Bottles

Clinton County has a rich history of brewing extending back to the late 19th century with seven brewery locations in the Lock Haven, Castanea, and Lockport area and two more in Renovo. The list below was provided by oldbreweries.com [Pennsylvania | Old Breweries Information | Breweriana Values](http://oldbreweries.com/Pennsylvania/Old-Breweries-Information/Breweriana-Values)



Plant of the Castanea Brewery.

LUCAS HOUSE.
O. D. Beck, Prop.

The Lucas House, O. D. Beck, proprietor, is conveniently located on the corner of Grove and Church Sts. It contains several finely furnished sleeping rooms and the sitting room and parlor are on the second floor. The dining room is neat in its appointments and the meals are first class. On the first floor is located the bar which is stocked with a fine line of imported and domestic wines, liquors, ales, beers, cigars, etc. Mr. Lucas is a genial and companionable man and just the right man in the right place.

1909

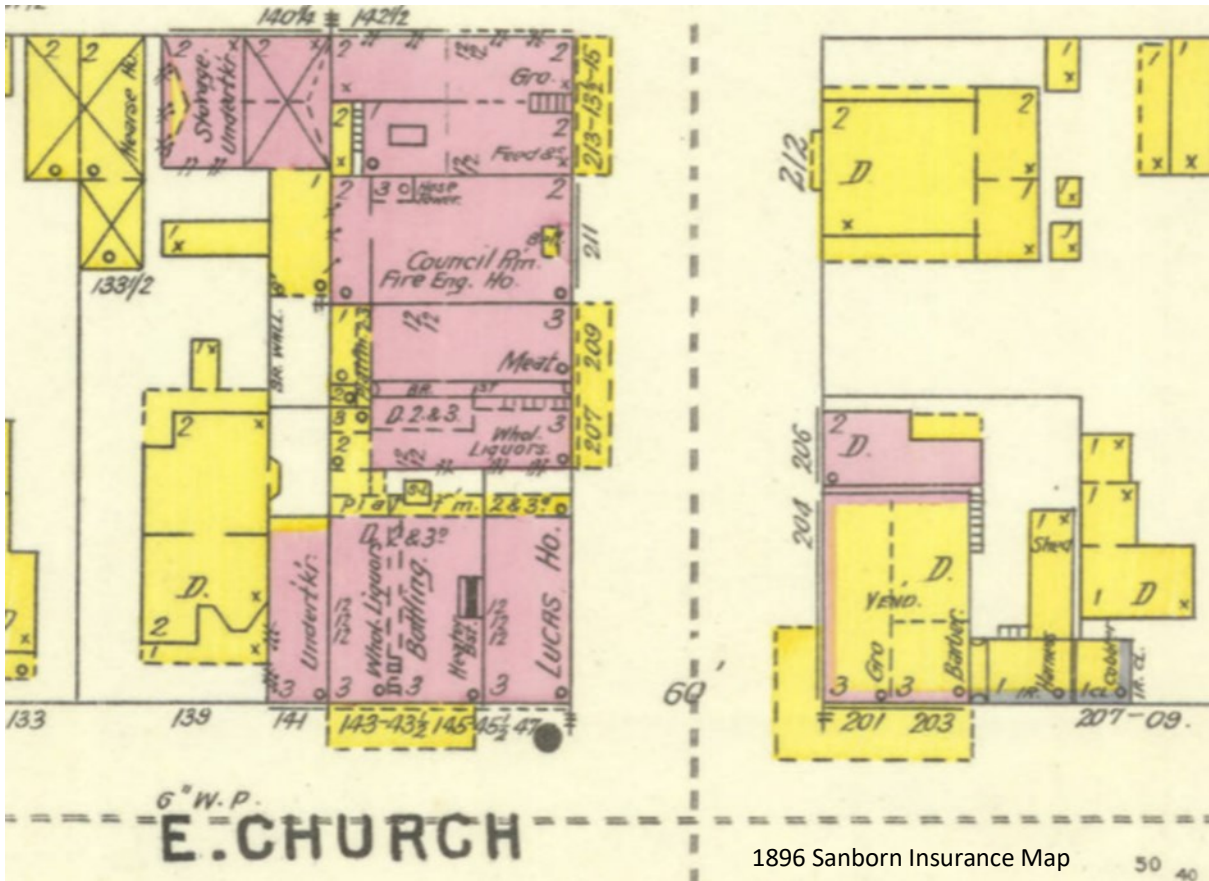
By 1896, the corner hotel had become the Lucas House, and bottling and liquor warehouses were next door. A horizontal steam boiler now existed in the basement. F. C. Lucas owned the Castanea Brewery. It is unknown if it was his family's name now associated with the *Old Corner*.

Lock Haven, PA - 7 Breweries

Brewery ID	Brewery Name	Start Date	End Date
PA 282a	Joseph Bacher & Joseph Garger Brewery	1860	1862
PA 282b	Joseph Bacher Brewery	1862	1865
PA 282c	Widmann & Fidel Pfeffer Brewery	1865	1866
PA 282d	Jacob Widmann Brewery	1866	1873
PA 282e	Rudolph Widmann & David Dubler Brewery	1873	1874
PA 282f	Mountain Spring Brewery	1874	1915
PA 282g	Mountain Spring Brewery	1915	1920
PA 282h	Lockport Brewing Co.	1933	1942
PA 283a	Phillip Fable Brewery	1863	c1874
PA 283b	Charles P. Fable Brewery	c1874	1883
PA 283.1a	Castanea Brewery	1883	1920
PA 283.1b	Castanea Ice & Beverage	1920	1942
PA 284a	Flaig & Gackle Brewery	1874	1877
PA 284b	Matthew Flaig Brewery	1877	1884
PA 284c	Geo. C. Luther Brewery	1884	1888
PA 284.1	J. G. Brown Brewery	Unknown	1869
PA 285	Gans & Hippe Brewery	1874	1875
PA 287a	Fidel Pfeffer Brewery	1867	1874
PA 287b	Valentine Sohmer Brewery	1874	1875
PA 287c	Mary Pfeffer Brewery	1875	1880
PA 287d	C. Morgenthau Brewery	1880	1884

Renovo, PA - 2 Breweries

Brewery ID	Brewery Name	Start Date	End Date
PA 730a	Luke Binder Brewery	1874	1897
PA 730b	Edward L. Binder Brewery	1897	1910
PA 730c	Binder's Brewery	1910	1920
PA 730d	Binder's Brewery	1955	1938
PA 730.1	George Burgess Brewery	c1869	Unknown



The Globe Bottling Works transitioned to the Holloway Bottling Company, perhaps because Ward Holloway was the proprietor of Globe Bottling. In 1898 Holloway reorganized the company as the Clinton Bottling Works and moved his operation across the street to the Lock Haven Market House under the management of C. F. Bickford. Holloway died in 1909. His obituary provided his full name, Henry Ward Beecher Holloway, and mentioned that in addition to his association as an agent with the Rochester Brewing Company, he also organized the Harvard Brewing Company near Boston, MA, and served as the president of the Castanea Brick Company organized in 1907. He is buried in Highland Cemetery, Lock Haven.

With the relocation of the Globe/Holloway/Clinton Bottling Works to the Lock Haven Market House on the southwest corner of East Church and Grove Streets, the then vacant space at 143 and 145 E. Church Street transitioned to Mosher's Steam Bottling Works under the operation of William A. Mosher.

In the 1901 Lock Haven City Directory, the *Old Corner* hotel was still recognized as the Lucas House and Omit Beck was its proprietor. However, the two upper stories formerly used as a hotel operation became residential space for Omit Beck and his wife who were living above the saloon. Ultimately, Omit Beck left the saloon business to become the Lock Haven Chief of Police serving in that position for 16 years of his 20-year service with the department. He died in 1935 and would have served as chief of police during Prohibition - a busy time in Lock Haven and Clinton County with several news reports of raids and arrests. He and his wife continued to live in the neighborhood as documented in the 1934 City Directory with residency at 205 N. Grove street.

Nationwide Prohibition caused many legal brewing and distilling operations to shutter their doors.

Bottling Works and Bottles

Lock Haven hosted several bottling works that made soft drinks and performed contract bottling for local breweries as well as larger breweries as distant as the Rochester Brewing Company in Rochester, NY and the St. Mary's Beer Company in St. Mary's, PA. Beer was delivered for commercial enterprises in wooden barrels (kegs) and to homes in bottles.

The information below was sourced from [Beer & Ale Bottles \(sha.org\)](http://sha.org)

Beer and soda bottles were very similar and with the prevalence of bottle re-use common, the same bottle could easily have held both products during its useable lifetime. Paper labels were used to identify the bottle contents. The bottles were the property of the beer bottler and were typically marked as such. Beer bottles were of thick glass since they had to survive extensive post-bottling handling and reuse, as evidenced by extensive base and side wear to many existing examples. It is possible to find beer bottles marked with Lock Haven Bottling Works, Lock Haven Steam Bottling Works, Mosher's and Holloway Bottling Works.

Beer and ale, being carbonated (known as "pressure ware" in the bottle making industry), pretty much had to be contained in cylindrical heavy glass bottles since such a shape is inherently stronger than other shapes. Research indicates that multi-sided bottles are uncommon; however, those were used by at least two of Lock Haven's bottling operations.



This is an 8-inch, 10-sided, hutch-type soda bottle from the Mosher's Steam Bottling Works, 145 East Church Street, Lock Haven PA. Mosher operated at this location in the early 1900s.



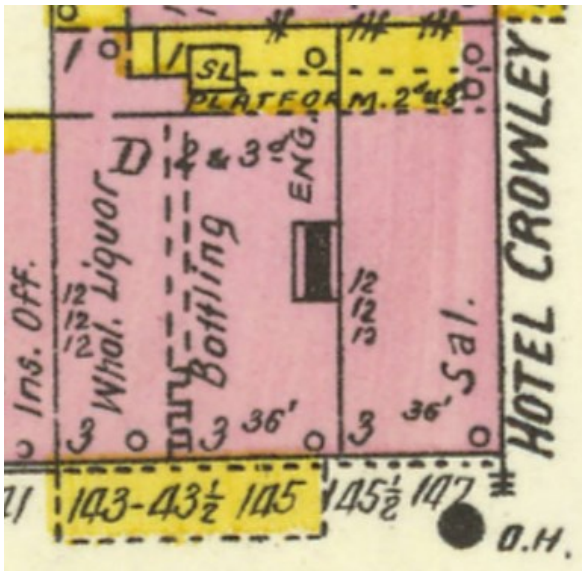
The second bottle is 9 inches tall and appears to have 8 sides, and is aqua in color. This Lock Haven Bottling Works bottle could have contained soda or beer and was likely used at 145 East Church Street, Lock Haven

The Hutchinson Beer or Soda bottle, called "hutch" for short, was in use around 1880-1920. These bottles have the unique shape shown in the photo below. This style supported use of the patented Hutchinson spring-loaded internal stopper. The name "Hutchinson" refers to the original inventor of this type of stopper.



If you find this hard maple wooden tool, buy it. It is the wooden injector used to insert the wire closure into a hutch bottle.



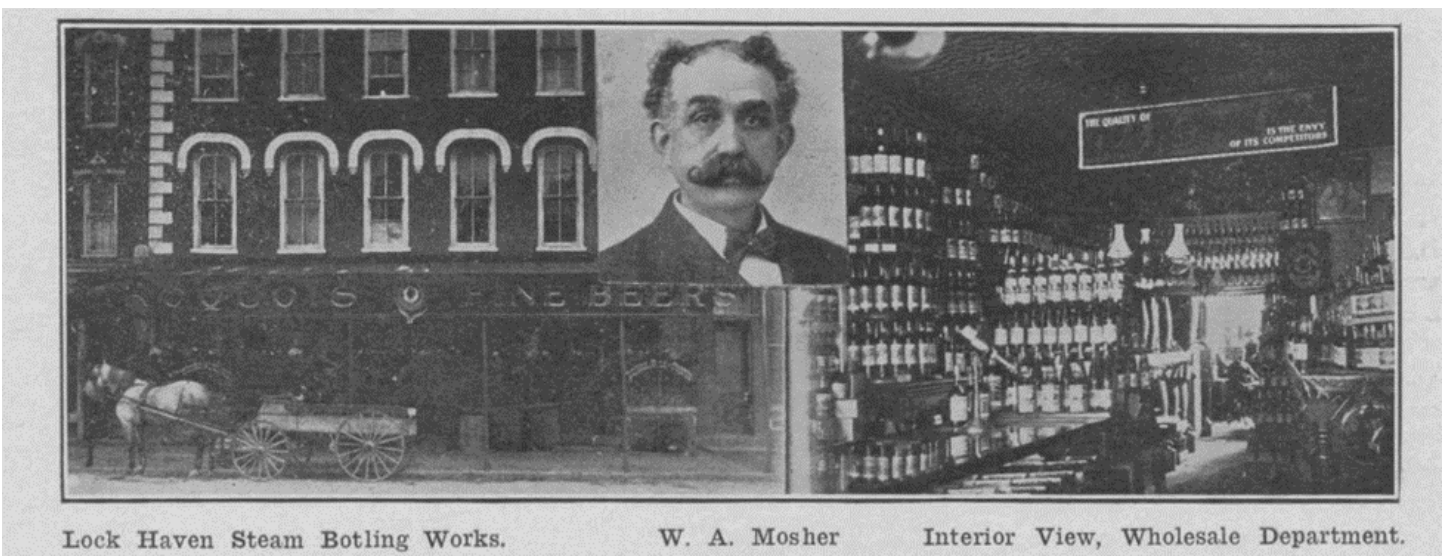


1906 Sanborn insurance Map

In 1906, the Sanborn Insurance Map noted a name change for the saloon/hotel. It was now recorded as Hotel Crowley. The photographer of the image below caught the Crowley sign that hung on the Old Corner.



Following Holloway’s bottling operations at 145 East Church Street, William A. Mosher acquired the operation naming it Mosher’s Steam Bottling Works. He subsequently served as the operator of the Lock Haven Steam Bottling Works and was recognized locally as being in the “wholesale liquor business”. On May 25 1917, the *Williamsport Grit* reported that Mosher sold the bottling works and building to Ernest W. _lenge of Reading, PA. (the first letter of the last name was illegible).

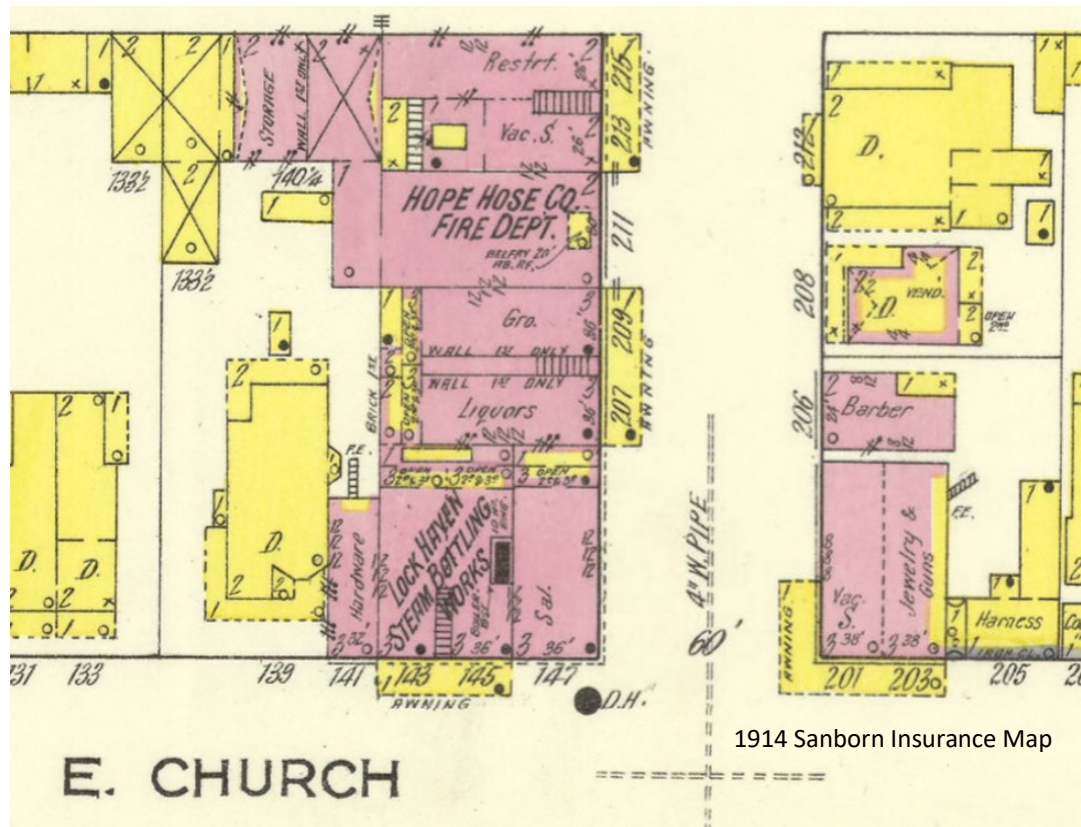


Information and Image Source: 1909 International Magazine of Industry published in Buffalo, NY

Mosher conducted a wholesale operation for carbonated soft drinks and bottled home-brewed beers, ales and porter as well as Budweiser and Iroquois beers. His specialties were Toca-Coca, Jersey Cream, and Cascade Ginger Ale. Note: Bottled Coca-Cola was introduced in 1894.

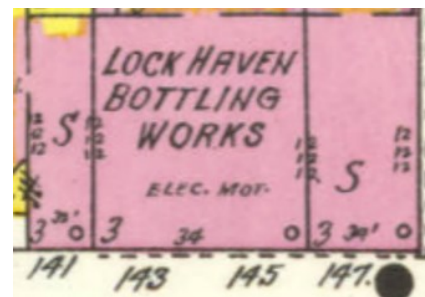
The newspaper report of Mosher's sale also confirmed that soft drinks or soda were made by Joseph Gramley at this site as early as 1904.

This substantiates the then-common practice of bottling both beer and soda in the same facility.

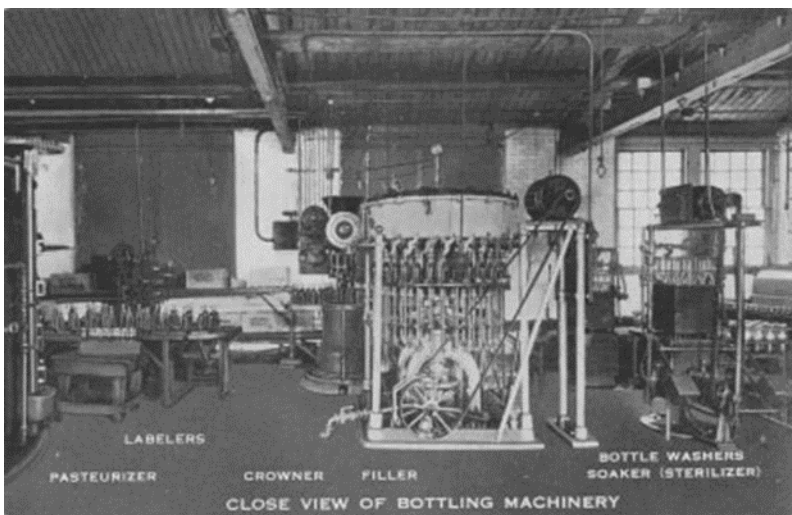


1914 Sanborn Insurance Map

On the 1925 Sanborn map, the word "steam" was removed from the bottling works name and the steam boilers were no longer documented as being interior to the building operations.



1925 Sanborn Insurance Map



Postcard depicting bottling machinery c. 1910. Source: Pike Microbrewery Museum, Seattle, WA

Architecture

The *Old Corner Bar and Grill* is a three-bay by six-bay, three-story rectangular-shaped brick building set on a stone foundation. It was constructed in the Italianate style of architecture. Below the flat, rear-sloping roof is a boxed wood projecting cornice, denticulated frieze and singular wood brackets. These same details also appear on the storefront cornice. The building's corners along Grove Street are quoined — offset and alternating raised brickwork.

All second and third floor window openings contain four-over-four flat-topped arched, wood double-hung sash with wood sills. Age appropriate interior wood shutters appear in some windows. Above each window is a raised brick window hood. There are no windows on the west side of this building due to the prior existence of two additional three-bay storefronts.

The first floor storefront façade features arched windows set above a paneled base. The side entrance to the upper floors is a recessed wood door with a large single pane transom. The bar and grill entrance is located on the street corner, recessed under the storefront cornice and on the diagonal. A cast iron corner post supports the storefront cornice at this location.

Of the many Italianate buildings in Lock Haven, this building's original storefront is one of only a few remaining. It is a prime example of Italianate-style commercial architecture.



Both photos taken December 2022.



Sanborn Insurance Map Symbols

(K.O.F.S.)

KEY to SYMBOLS

HEIGHT OF BUILDING IN FEET	Fire proof construction. (OR FIRE RESISTIVE CONSTRUCTION)	Window opening in first story.
IRON BUILDING	Iron building.	Windows " " second and third stories.
STONE BUILDING	Stone building.	" " " " " fourth "
(C.B.)	Hollow concrete or cement block construction.	" " with wired glass.
CONCRETE	Concrete or reinforced concrete "	" " iron or tin clad shutters.
TILE	Tile building.	Elevators. [H] OPEN [HT] WITH TRAPS Hoistways.
NUMBER OF STORIES 4 NON-COMBUSTIBLE ROOF COVERING OF METAL, SLATE, TILE OR ASBESTOS SHINGLES O	Brick building with brick or metal cornice	[E] OPEN [E] BRICK Frame enclosed elevator.
TWO STORIES AND BAST 2B	Brick building with frame cornice.	[ET] " " " with traps.
COMPOSITION ROOF	Brick building with stone front.	[ESC] " " " self closing traps.
FRAME PARTITION SHINGLE ROOF X	" " " frame side.	[ET] Brick " " " traps.
VEN'D	Brick veneered building.	[ESC] " " " self closing traps.
BRICK 1ST	Brick and frame building.	[E] " " " wired glass door.
D = DWELLING	Frame building.	[UP.B.] Horizontal steam boiler.
F = FLAT S = STORE	" " metal clad.	Vertical " "
LOFT	Tenant building occupied by various manufacturing risks.	BRICK O IRON Chimney.
Stable.	Fire wall 6 inches above roof.	O V.P. Vertical pipe or stand pipe.
SKYLIGHT LIGHTING TOP STORY ONLY	" " 12 " " "	(AS) Automatic sprinklers.
SKYLIGHT LIGHTING THREE STORIES	" " 18 " " "	(AS) " " in part of building only.
WIRED GLASS SKYLIGHT	" " 36 " " "	(ACS) Automatic chemical sprinklers.
FIRE WALL 48 INCHES ABOVE ROOF	Figures - 12, 16 - indicate thickness of wall in inches.	(NS) Not sprinklered.
2345 ALL	Wall without opening and size in inches.	AFA. Automatic fire alarm.
Opening with single iron or tin clad door.	" " with openings on floors as designated.	IEP. Independent electric plant.
" " double " " " " doors.	Opening with single iron or tin clad door.	(FA) Fire alarm box.
" " standard iron vault doors or standard tin clad doors.	Opening with double iron or tin clad doors.	Fire pump. G.T. Gasoline Tank
Opening with wired glass doors.	Opening with wired glass doors.	(15) Ground elevations.
WATER TANK	Fire engine house, as shown on key map.	72 Reference to adjoining page.
		(47) Under page number, refers to corresponding page of previous edition.

728

This history was compiled in December 2022 by Sue Hannegan as a Christmas gift for Shaun Dale, the 2022 owner and operator of the Old Corner Grill and Bottle Shop.